



## This Issue

- WQ Officer & Chairman Reports
- Virtual Quilt Shows, Lectures, & Classes
- Call for Entries
- Neighborly Guild Calendar



## WQ Quarterly Meeting

**Youngmin Lee**

**“Bojagi Quilts”**

Our speaker over Zoom

**Saturday, February 7th**

Sewing Arts Center (and on zoom)  
 2306 Corinth Ave, Los Angeles, CA 90064  
 Social Hour at 9:30,  
 Meeting from 10:00am to 12:00pm



## Upcoming Workshops & More



- **February 7, 2026 Quarterly Meeting**
- **March 21 - It's National Quilting Day!** Join us for a Zoom workshop with Kristin Echols teaching Seminole Patchwork. This will be a 4-hour workshop from 9:00am-1:00pm. Location: Your sewing room!
- **April 11 Spring Sew-in!** 10:00am to 3:00pm. LAPD Pacific Division Police Station. 12312 Culver Blvd., LA 90066.
- Check out the Westside Quilters [website](#) to see all our 2026 programs!

## NATIONAL EMBROIDERY MONTH

*“National Day” pictures are actual quilts.*

**February**





**WQ Quarterly Meeting**  
**Youngmin Lee**  
**“Bojagi Quilts”**  
 Our speaker over Zoom

**Saturday, February 7th**

Sewing Arts Center (and on zoom)  
 2306 Corinth Ave, Los Angeles, CA 90064  
 Social Hour at 9:30,  
 Meeting from 10:00am to 12:00pm

Korean-born artist Youngmin Lee holds a master’s degree in fashion design and a bachelor’s degree in clothing and textiles. She has presented numerous workshops, classes and demonstrations on Korean arts and crafts around the Bay Area. Recently she has demonstrated her Bojagi and Maedub in Asian Art Museum in San Francisco as a part of Asia Alive Program. She also has participated Oakland Museum’s Lunar New Year celebration with her Bojagi and Maedub artwork. She has written a book, Bojagi: the Art of Korean Textiles and also leads textile tours of Korea.



<p>National Strawberry Day Feb. 27<sup>th</sup></p>		<p>The Big Breakfast Day Feb. 27<sup>th</sup></p>		<p>National Banana Bread Day February 23<sup>rd</sup></p> 
<p>National Drink Wine Day February 18<sup>th</sup></p>		<p>California Kiwifruit Day Feb. 2<sup>nd</sup></p> 	<p>National Cherry Pie Day February 20<sup>th</sup></p> 	



## Zoom Workshop

**Kristin Echols**

**“Seminole Patchwork Techniques”**

**Saturday, March 21, 2026**

9:00am – 1:00pm

WQ member, \$50.00, non-member, \$60.00

Registration opens February 7, 2026

Join us on National Quilting Day for a virtual workshop with Kristin Echols on Seminole Patchwork.

Kristin started her quilting journey in 1999 when she made a baby quilt for her best friend, using fabric from the bridesmaid dress she wore in her friend’s wedding. Although acetate isn’t the ideal material for a baby quilt, Kristin quickly became passionate about quilting. She began taking classes, invested in a Janome sewing machine, made friends at her local quilt shop, and embraced quilting as her creative hobby to balance her career as a computer engineer.

Her fascination with Seminole patchwork began when she saw the technique featured on Simply Quilts. Driven by curiosity, she sought out all available books on the subject and started incorporating Seminole strip piecing into her quilts and home decor projects. She enjoys the vivid and intricate patterns created by joining strips of fabric, cutting them apart, and sewing them back together. For over 15 years, Kristin has been sharing these techniques through teaching.

Kristin retired from the County of Sacramento where she spent 23 years as a computer geek. When not quilting or teaching, she enjoys spending time with her husband, their three grown children and two grandkids. They live on 18 acres in beautiful Worley, Idaho.

### Supplies:

- \_\_\_ ¼” foot for piecing
- \_\_\_ Rotary cutter (treat yourself to a fresh blade!)
- \_\_\_ 6” X 24” ruler with 45° and 60° markings
- \_\_\_ Pins or clips
- \_\_\_ Neutral colored 50 wt. cotton thread for piecing








**Fabric:**

This is a technique class to learn the concepts of Seminole strip piecing. We will make 3 different Seminole designs in class. The Seminole designs look best with solids or fabrics that read as solids such as tone-on-tones or small prints. A striped fabric can be fun too, but large prints distract from the Seminole designs.

More details and cutting instructions will be sent to all registered attendees.



<p><u>Kiss Day</u> February 13<sup>th</sup></p>		<p><u>Sweater Day</u> Feb. 4<sup>th</sup></p>		<p><u>World Day of Social Justice</u> February 20<sup>th</sup></p>	
<p><u>Let's All Eat Right Day</u> February 25<sup>th</sup></p>		<p><u>National Sticky Bun Day</u> Feb. 21<sup>st</sup></p>		<p><u>National Ukulele Day</u> February 2<sup>nd</sup></p>	
<p><u>Read In The Bathtub Day</u> Feb. 9<sup>th</sup></p>		<p><u>Analog to Digital TV Day</u> Feb. 17<sup>th</sup></p>		<p><u>National Pancake Day 2025</u> February 28<sup>th</sup></p>	
<p><u>Car Insurance Day</u> February 1<sup>st</sup></p>		<p><u>Feed the Birds Day</u> February 3<sup>rd</sup></p>		<p><u>National Play Tennis Day</u> Feb. 23<sup>rd</sup></p>	

## **Leadership.....**

### **What's New?**

*By Pat Karasick*

Some of you probably went to Road to California and maybe bought fabric. But it's a year to the next Road to California, where can you buy fabric and or notions? I have put together a list of brick-and-mortar stores and online resources. Of course, the first stop would be **Sewing Arts Center** where we have our quarterly meetings. Julie offers you a 20% discount after you stay for the entire meeting. Sweet deal. The rest are approximately an hour drive. I don't shop online unless it's absolutely necessary, but I have included some sources I have used or heard were reliable. If anyone has other resources, those can be added to the list. Bring other sources to our next meeting, Saturday, February 7, at Sewing Arts.



### **Quilting Resources for Fabric and Notions**

#### **Brick and Mortar:**

**Sewing Arts Center:** 2306 Corinth Ave., LA, CA 90064. 310-450-4300

In store and online closest quilt shop to us. Best advice on fabrics and sewing advice. Long arm quilting available. Take a lesson and you can rent time on a smaller Bernina longarm machine.

**Fabric Planet** 423 Lincoln Blvd., Venice, CA 90291. 310-310-3049

Not a quilt shop, but does have a limited amount of quilting cotton, lots of other fabrics and notions, like zippers. [www.myfabricplanet.com](http://www.myfabricplanet.com)

#### **Cotton & Chocolate Quilt Company**

1724 Avenida De Los Arboles #E, Thousand Oaks, CA 91362. [www.cottonandchocolate.com](http://www.cottonandchocolate.com)

**Quilt Emporium** 4918 Topanga Canyon Blvd. Woodland Hills, CA 91364. [www.quiltemporium.com](http://www.quiltemporium.com)

**Quilty Pleasures.** 1555 Simi Town Center Way Unit #165, Simi Valley, CA 93065. 805-581-1577  
About an hour away, good newsletter, online ordering is available.

**Superbuzzy.** 1794 E. Main Street, Ventura, CA 93001. 805-643-4143. [Superbuzzy.com](http://Superbuzzy.com)

**M & L Fabrics Discount Store.** 3430 W. Ball Road, ANAHEIM, CA 92804 714-995-3178  
M- Sat. 10am- 5pm, Sun. 12pm-5pm

#### **Online:**

**The Batty Lady.** 1024 2<sup>nd</sup> Street, Norco, CA 92860 [www.@battylady.com](http://www.@battylady.com)

**Fabritique/Strands Exotic fabric / Sashiko supplies and Aurifil thread** [Fabritique.com](http://Fabritique.com)

[www.fatquarters.com](http://www.fatquarters.com) kits, bundles, notions, jelly rolls, cross stitch

[www.Connecting Threads.com](http://www.ConnectingThreads.com)

[www.Shabby Fabrics.com](http://www.ShabbyFabrics.com) (tutorials)

www.Missouri Star.com. ( tutorials)

[www.equilter.com](http://www.equilter.com) 15,000 square foot warehouse in Boulder, Colorado fast shipping service 2% of sales donated to charity

www.Sewhungryhippie.com (bags)

[www.keepsake](http://www.keepsake) Quilting fabrics and notions, kits

[www.modafabrics.com](http://www.modafabrics.com)

[www.modabakeshop.com](http://www.modabakeshop.com)

[Quiltersselect.com/products](http://Quiltersselect.com/products)

[www.EleanorBurns.com](http://www.EleanorBurns.com) fabric and tutorials


Jordan Fabrics

The Quilt Show paid internet programming \$49.00, newsletter, programs, free patterns, quilting instruction, special program on Saturday with Dee Christopher, and a quilt shop. 25% coupon when you sign up.

Hope to see you with your Quilters Showcase quilts.

Pat Karasick  
Acting President

---

<p><u>Floral Design Day</u> Feb. 28<sup>th</sup></p> 	<p><u>Rose Day</u> February 7<sup>th</sup></p> 	<p><u>National Pokemon Day</u> Feb. 27<sup>th</sup></p> 
<p><u>National Walking the Dog Day</u> Feb. 22<sup>nd</sup></p> 	<p><u>National Chopsticks Day</u> February 6<sup>th</sup></p> 	<p><u>National Love Your Pet Day</u> Feb. 20<sup>th</sup></p> 
<p><u>National Alycat Day</u> Feb. 23<sup>rd</sup></p> 	<p><u>International Day of Women and Girls in Science</u> February 11<sup>th</sup></p> 	<p><u>National Umbrella Day</u> February 10<sup>th</sup></p> 

# Philanthropy.....

It was great to see so many quilters join in our latest Sew-in. We were able to get a lot of work done and have a very comfortable time. We hope more of you will come and join in.

We're hoping to have a few of the quilts donated for Philanthropy. We are still working on placemats for the Meals on Wheels program which is an ongoing project. So if you have material you don't know what to do with you can always make a placemat. The size is 14 inches by 18 inches with batting and a little quilting on your finished project. You can always bring a finished project to our quarterly meeting to be donated or contact Virginia or Luann. Hopefully we will get some feedback from the quilts we have donated to help the teens project coming up this month for the teen survivors of the Altadena fires.

We hope to see you at the quarterly meeting February 7th.

Keep on quilting,

Luann and Virginia  
Philanthropy

<p><u>National Shower with a Friend Day</u> February 5<sup>th</sup></p> 	<p><u>Women in Blue Jeans Days</u> February 20<sup>th</sup></p> 	<p><u>National River Day</u> February 2<sup>nd</sup></p> 
<p><u>National Weatherman's Day</u> Feb. 5<sup>th</sup></p> 	<p><u>National Ballet Day</u> Feb. 7<sup>th</sup></p> 	<p><u>Read to Your Child Day</u> February 14<sup>th</sup></p> 
<p><u>National Homemade Soup Day</u> Feb. 4<sup>th</sup></p> 	<p><u>Give Kids A Smile Day</u> Feb. 7<sup>th</sup></p> 	<p><u>Spunky Old BROADS Day</u> Feb. 1<sup>st</sup></p> 

## Treasurer

Karynn Dittmar, Treasurer

<b>OPENING BALANCE AS OF 5/25/25</b>		<b>5370.25</b>
<b>INCOME</b>		
Membership Dues / Donations	1705.00	
Workshop Fees	0.00	
Guest Fees	0.00	
Fabric Sale Fundraiser	0.00	
<b>TOTAL INCOME</b>		<b>1705.00</b>
<b>EXPENSES</b>		
Workshop Expense	0.00	
General Meeting Expense	550.00	
Equipment for Meetings	0.00	
Charitable Contributions	150.00	
Bank Adjustment	0.00	
Administrative Expenses	0.00	
Membership Expenses	196.14	
SCCQG Insurance	212.75	
Website	323.34	
PO Box Rental	268.00	
Philanthropy / Ed. Expense	0.00	
Printing / Promotion / Admin.	0.00	
Square Up/Pay Pal Fees	4.52	
Government Fees	25.00	
<b>TOTAL EXPENSE</b>		<b>1729.75</b>
<b>NET INCOME</b>		<b>-24.75</b>
<b>CLOSING BALANCE as of 1/25/26</b>		<b>5345.50</b>

## Website and Social Media:

The Calendar page of the WQ website - [www.westsidequilterslosangles.org](http://www.westsidequilterslosangles.org). - has just been updated with some more info on our programming through August, 2026. Also, Thanks to Pat Karasick and her photography, all the photos from the recent January Sew-in are up on the Photos page. Be sure to visit the Programs page for more information about our February speaker Youngmin Lee.

Sally Wright, Website and Social Media Manager.



Vicki Vaughn February 2  
Deborah Nussbaum February 7



Valentine's Day with a quilter.

## ***Calls for Entry February 2026***

We're sort of between seasons right now... there will be lots of new opportunities after coming up in 2026!

Continuing our notifications for ways to display your quilts and textile pieces to a wider audience... For some great information from a veteran on how to get your work shown see this blog entry from Sue Bleiweiss <https://suebleiweiss.blog/2018/06/14/getting-your-work-out-there/> I also recommend this blog post from Lyric Kinard on how to choose venues to display your work - <https://lyrickinard.com/2019/05/showing-your-work-choosing-venues/>

Here are some suggestions for quilt entry photography from International Quilt Festival.

### **PHOTOGRAPHING YOUR QUILT FOR SUBMISSION**

- Having a great photo of your quilt - straight on, in focus, not on a bed or held up showing hands and feet, super important. There is lots of great info on quilt photography on line. Google!

Entering shows is not difficult, but to begin here are a few guidelines: Always make sure you read everything in the call including the calendar, requirements, rules, etc.

- Especially the rules! Will save headaches and disappointment later on.
- Keep a record on your entries so you won't be caught with a quilt needing to go two places at once.
- Having to remove a quilt from a show or exhibit because you misread the exhibition dates is a no-no. Ask me how I know...
- Don't be intimidated or depressed by a rejection! There are lots of different reasons why a quilt doesn't fit into a specific show. It is usually not because your quilt is bad!

The calls below are just a sample of the many opportunities out there. For more search "Fiber Art Calls for Entry" or "Quilt Calls for Entry"

**Here are some calls... More to come soon.**

## **International Quilt Festival has announced the Special Exhibits for 2026**

Rules and entry forms at <https://www.quilts.com/enter-your-quilt/>

### **A SONG IN STITCHES \*NEW THIS YEAR!\***

Whether it's rock or pop, country or blues, gospel, jazz, or classical, soul or R&B, or rap or heavy metal, songs have always inspired both people and artists working in all sorts of mediums. They can also come wrapped in memories, instantly transporting the listener to a specific place and time in their life. In this challenge, artists will submit a quilt with the same title as a song, and then interpret that tune or their feelings about it in fabric. Rules and entry forms at <https://www.quilts.com/enter-your-quilt/>

*Entry Deadline May 28, 2026*

### **CELEBRATE LIFE**

Art is an excellent way to express emotions. For this exhibit, artists depict how they, a family member, or a friend celebrated a loved one's wedding, birth, birthday, or memorial. Colors, patterns, traditional blocks, or abstract drawings can be combined or used alone to convey a range of emotions from happy to sad. Share your emotional art with others! Rules and entry forms at <https://www.quilts.com/enter-your-quilt/>

*Entry Deadline May 28, 2026*

## HANDS ALL AROUND

Artists from around the world incorporate influences from their own cultures into the design and technique of their quilts. This prestigious, long-running international showcase includes recent quilts by some of these international artists.

Rules and entry forms at <https://www.quilts.com/enter-your-quilt/>

*Entry Deadline June 11, 2026*

## IN FULL BLOOM

Just as quilters create beautiful art with fabric, florists and gardeners cultivate works of beauty from the soil. This exhibit showcases floral-inspired quilts from across the spectrum in lush color and splendor.

Rules and entry forms at <https://www.quilts.com/enter-your-quilt/>

*Entry Deadline May 28, 2026*

## IN THE AMERICAN TRADITION

Contemporary quiltmakers often look to the art form's rich tradition and history for inspiration in their own work. This exhibit features recently made quilts incorporating traditional blocks, styles, and/or techniques. Rules and entry forms at <https://www.quilts.com/enter-your-quilt/>

*Entry Deadline May 14, 2026*

## LANDSCAPE QUILTS

From valleys and volcanoes to mountains and monuments, landscapes often inspire artists, including many in the quilt world. This exhibit showcases many stunning geographical wonders.

Rules and entry forms at <https://www.quilts.com/enter-your-quilt/>

*Entry Deadline June 11, 2026*

## MODERN QUILTS: A TWIST ON TRADITION

Modern quilts often take traditional blocks and reinterpret them by using solid-colored fabrics or give them a new twist by using negative space, minimal repeats, improvisational piecing, and gridding for quilting. A modern quilt can be pieced or appliquéd. Share your interpretation of a modern quilt based on a traditional pattern with us!

Rules and entry forms at <https://www.quilts.com/enter-your-quilt/>

*Entry Deadline May 14, 2026*

## TACTILE ARCHITECTURE™

Buildings have a long history of inspiring the creative designs of quiltmakers. In the 19th century, American quilters developed classic architectural blocks and patterns such as Log Cabin, Schoolhouse, and Brick Wall. This annual juried exhibit challenges quiltmakers to create works based on architectural themes and inspirations. The quilt style may be traditional, modern, or art.

Rules and entry forms at <https://www.quilts.com/enter-your-quilt/>

*Entry Deadline June 11, 2026*

Questions?

Sally Wright [sally@sallywrightquilts.com](mailto:sally@sallywrightquilts.com)

Take a Cruise  
Day  
February 3<sup>rd</sup>



National Send  
a Card to a  
Friend Day  
February 7<sup>th</sup>



## Out and About:.....

**Pasadena Museum of History** - Exhibition: Stories, Traditions & Designs: Spotighting the African American Quilters of Los Angeles

Members of the African American Quilters of Los Angeles (AAQLA) will select from among their own creations for a display that expresses their history, creativity, and shared experiences.

**South Bay Quilt Guild** "Quilt Show 2026: Celebrating the Seasons" \_Saturday Feb 14- Sunday Feb 15, 2026

**Los Angeles County Quilters Guild** quilt show "2026 Celebrate Quilts Quilt Show!" Friday, May 8 (10am to 5pm) and Saturday, May 9 (9am to 4pm). Location: Sports Basement Long Beach, 2100 N. Bellflower Blvd., Long Beach, CA 90815. Opportunity Baskets, bidding in the Silent Auction, shopping at the Vendor Mall, and hunting for treasures at the Quilter's Flea Market.

**EBB & FLOW** is a five-day immersive textile retreat taught and guided by Jean Impy, start to finish. It is not an open studio retreat, and it is not a loosely structured experience. Each day builds on the last, with clear instruction, shared learning, and time to develop work that becomes deeply personal and truly one of a kind.

We begin together on the first day by learning the techniques behind creating a Fabulous Face. Jean teaches the process in full so that everyone gains the skills, confidence, and understanding needed to move forward. This day establishes the foundation for the entire week



*This retreat is centered around creative flow, process, and legacy work. It is not a traditional workshop format and is designed as an immersive experience.*

### ABOUT OUR RETREAT

- Five immersive days of sewing and creative flow, storytelling and personal expression with international teacher **JEAN IMPEY**.
- Spacious worktables and ergonomic seating
- Original Freddy Moran signed quilt top included
- Guided inspiration with freedom to explore
- Optional evening sewing sessions
- Small group, intentional pace, supportive environment
- Catered lunches

### WHO THIS RETREAT IS FOR

- Quilters who enjoy color, personality, and story
- Artists interested in process-based work
- Freddy Moran admirers who missed the chance to work directly with her
- Anyone seeking a creative reset in a relaxed, supportive setting

**May 3-8, 2026**

*Twisted Thread Retreat Center  
Superior, Colorado (just outside Denver)*

*Limited to 35 participants*

*Tuition is \$1,950; Deposit is required to hold a space  
Quilt tops are selected in the order deposits are received*



scan for more information



**SEWJEAN**  
www.sewjean.com  
jean@sewjean.com

**Deborah Weir's Mixed Media Fiber Art Exhibit** March 11 – March 31, Wednesdays -Sunday 2-7pm Hellada Gallery 117 Linden Ave. Long Beach 90802. Parking: street or at nearby Westin Hotel. In the heart of the Long Beach Arts District. Stop by or make an appointment. Scheduled Artist Walk Throughs: Sat. 3/14 12-3pm, Wed. 3/28 11-3pm, Gallery (562)435-5232 or Deborah: [FiberFly@icloud.com](mailto:FiberFly@icloud.com)





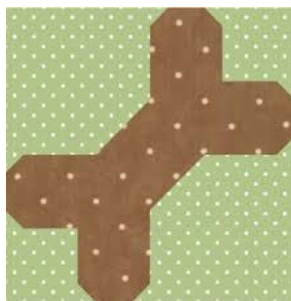
## A NEIGHBORLY GUILD CALENDAR

February 2026	
February 4 Santa Monica Quilt Guild <a href="http://www.santamonicaquiltguild.org">www.santamonicaquiltguild.org</a>	<u>Joe Cunningham</u> Lecture
February 7 <b>Westside Quilters</b> <a href="http://www.WestsideQuiltersLosAngeles.org">www.WestsideQuiltersLosAngeles.org</a>	<u>Youngmin Lee</u> Lecture: Bojagi Quilts
February 8 & 9 San Fernando Valley Quilt Guild <a href="http://www.sfvvgg.net">www.sfvvgg.net</a>	Robin Ruth, Lecture: "Modern Mariner's Compass, Strip Pieced" Workshop: Strip Pieced Mariner's Compass Basics
February 9 LA Modern Quilt Guild <a href="http://www.LAMQG.org">www.LAMQG.org</a>	<u>Meeting</u>
February 12 Glendale Quilt Guild <a href="http://www.glendalequiltingguild.org">www.glendalequiltingguild.org</a>	<u>Meeting</u>
February 14-15 South Bay Quilters Guild <a href="http://www.southbayquiltersguild.org">www.southbayquiltersguild.org</a>	Quilt Show 2026: Celebrating the Seasons Holiday Party
March 2026	
March 4 Santa Monica Quilt Guild <a href="http://www.santamonicaquiltguild.org">www.santamonicaquiltguild.org</a>	<u>TBD</u>
March 7 & 21 LA Modern Quilt Guild <a href="http://www.LAMQG.org">www.LAMQG.org</a>	Sew-Ins <sub>2</sub>
March 9 San Fernando Valley Quilt Guild <a href="http://www.sfvvgg.net">www.sfvvgg.net</a>	<u>Teresa Duryea</u> Lecture: " <a href="#">Sewing &amp; Survival, Native American quilts 188002022</a> " "
March 14 Glendale Quilt Guild <a href="http://www.glendalequiltingguild.org">www.glendalequiltingguild.org</a>	<u>Elka Miyahara</u> Workshop: Hawaiian Applique
March 21 <b>Westside Quilters</b> <a href="http://www.WestsideQuiltersLosAngeles.org">www.WestsideQuiltersLosAngeles.org</a>	<u>Kristin Echols</u> Workshop: "Seminole Patchwork Techniques"
March 21 South Bay Quilters Guild <a href="http://www.southbayquiltersguild.org">www.southbayquiltersguild.org</a>	<u>Becky McDaniel</u> Workshop: "Crazy Cushion"

National  
Brown  
Dog Day  
February  
2<sup>nd</sup>



National  
Dog  
Biscuit  
Day  
February  
23<sup>rd</sup>



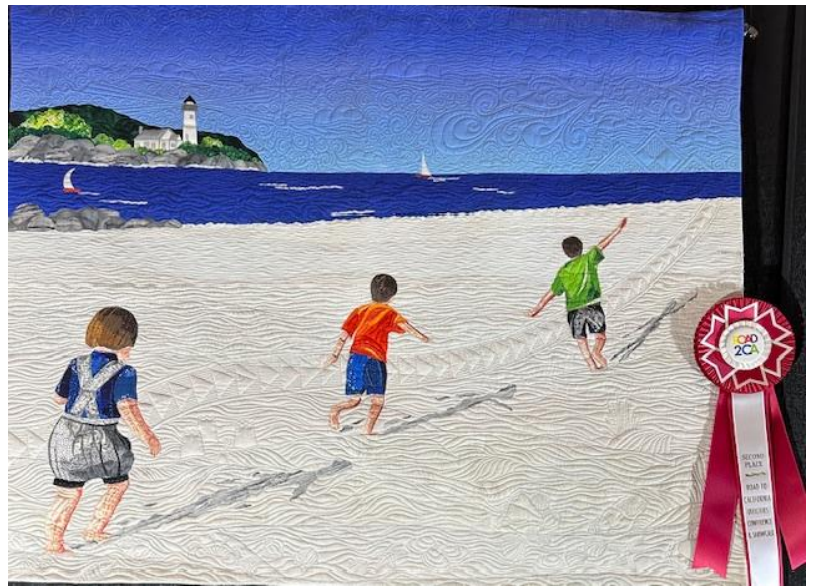
National  
Golden  
Retriever  
Day  
February  
3<sup>rd</sup>



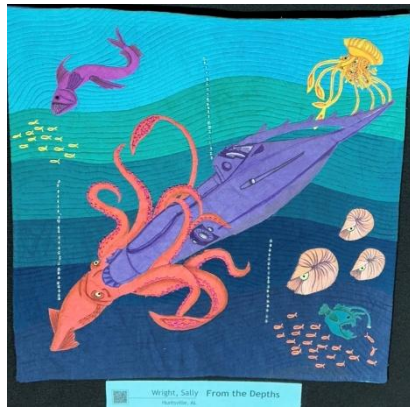
## Editor's Note.....

I always look forward to Road2CA, the creativity never ceases to amaze me. What are the quilting trends? What new quilting gadget will I find among the vender booths? It's always a wonderful way to spend the day.

It's hard to pick a favorite when there are so many amazing quilts at Road, but "Flight of Wonder" by Katie Henrich caught my eye. The story it tells is timeless and sweet, and the quilting artistically enhances the story with sand castles, sea shells and the clever use a flying geese motif to complement the motions and joy of the children.



Congratulations to Marianne Simpson and Sally Wright, both Westside Quilters had their quilts accepted.



Our friend Kathryn Pellman and 2 of her friends had their art quilts featured. Oh my, love to see what Kathryn's Fashionistas are up to!



Happy stitching.....

Debbie Nussbaum  
WQ Newsletter Editor

## Executive Meeting- Sunday, January 11, 2026 on Zoom

Meeting was called to order at 1:05 P.M. by Pat Karasick

In attendance: Pat Karasick, Terrie Dorio, Karynn Dittmar, Luann Jaffe, Virginia Marshall, Sally Wright

**Acting President/V-P** Pat Karasick reported that the SCCQG meeting was about fundraising. Allyson L. will report back if anything is pertinent our guild. Yesterday's Sew-in was a success. Terrie will talk about it in her report.

**Secretary:** No report

**Treasurer:** Same balance \$5345.50

**Programs:** Sew-in was a big success with more members attending in person and 2 on Zoom. Need to try to engage the Zoom sewers more.

- 2/7/26 Meeting will be at Sewing Arts Center with a Zoom lecture by Youngmin Lee on Bojagi Quilts.
- 3/21 National Quilting Day- Virtual class with Kristina Echols" Seminole Patchwork" as seen on Global Connection Sampler. \$50 members, \$60 non-members
- 4/11 Spring Sew-In with demonstration to make thread catcher bags.

**Philanthropy:** Quilts donated to a church in Pasadena having a February event for teen survivors. Remaining 7 small quilts will be donated to Pendleton Spring collection.

**Newsletter:** Articles due 1/25. Pat will write up sewing resources in the area, Karynn will try to have an article about Road to California.

**Website:** Photos from the December tea are up. Photos from the Sew-in will be available soon.

**New business:** None

**Next Board meeting is set for 2/22 at 1:00 P.M. on Zoom. Terrie will send out link.**

Meeting adjourned at: 1:35 P.M.

Respectfully submitted:  
Pat Karasick

<u>Mardi Gras</u> February 17 <sup>th</sup> 	<u>National California Day</u> February 22 <sup>nd</sup> 	<u>National Gumdrop Day</u> Feb. 15 <sup>th</sup> 
<u>National Carrot Cake Day</u> February 3 <sup>rd</sup> 	<u>National Handcuff Day</u> Feb. 20 <sup>th</sup> 	<u>World Bartender Day</u> February 24 <sup>th</sup> 

## Next Executive Board Meeting

The next meeting of the Executive Board will be held, February 22, 2026  
 All members of Westside Quilters are welcome to attend with prior notice to  
[Pres@WestsideQuiltersLosAngeles.org](mailto:Pres@WestsideQuiltersLosAngeles.org).

<p><i>Our Mission</i>                  A new kind of guild organized for educational and charitable purposes; to promote cooperation and the exchange of ideas among quilters; to instruct members in methods and techniques of traditional and contemporary creative quilting; to serve mini-groups and their philanthropic endeavors within the community; to inspire personal achievement.</p> <p>Officers 2022-2023</p> <table style="width: 100%; border: none;"> <tr> <td style="padding-left: 20px;">President</td> <td>?????</td> </tr> <tr> <td style="padding-left: 20px;">Vice President</td> <td>Pat Karasick</td> </tr> <tr> <td style="padding-left: 20px;">Secretary</td> <td>Luann Jaffe</td> </tr> <tr> <td style="padding-left: 20px;">Treasurer</td> <td>Karynn Dittmar</td> </tr> <tr> <td style="padding-left: 20px;">Program</td> <td>Terrie Dorio,</td> </tr> <tr> <td style="padding-left: 20px;">Membership</td> <td>Sonja Daniel</td> </tr> <tr> <td style="padding-left: 20px;">Newsletter</td> <td>Debbie Nussbaum</td> </tr> <tr> <td style="padding-left: 20px;">Philanthropy</td> <td>Virginia Marshall and Luann Jaffe</td> </tr> <tr> <td style="padding-left: 20px;">Website Manager</td> <td>Sally Wright</td> </tr> </table> <p>Appointed Positions</p> <table style="width: 100%; border: none;"> <tr> <td style="padding-left: 20px;"><b>Hospitality</b></td> <td></td> </tr> <tr> <td style="padding-left: 20px;"><b>Meeting Set-Up/Take-Down</b></td> <td>Anata Withrington and Prima Casetta</td> </tr> <tr> <td style="padding-left: 20px;"><b>Photographer</b></td> <td>Everyone</td> </tr> <tr> <td style="padding-left: 20px;"><b>President Emeritus</b></td> <td>Terrie Dorio</td> </tr> </table> <p>Mailing Address</p> <table style="width: 100%; border: none;"> <tr> <td style="padding-left: 20px;">Post Office Box 641925 Los Angeles, CA 90064</td> </tr> </table>	President	?????	Vice President	Pat Karasick	Secretary	Luann Jaffe	Treasurer	Karynn Dittmar	Program	Terrie Dorio,	Membership	Sonja Daniel	Newsletter	Debbie Nussbaum	Philanthropy	Virginia Marshall and Luann Jaffe	Website Manager	Sally Wright	<b>Hospitality</b>		<b>Meeting Set-Up/Take-Down</b>	Anata Withrington and Prima Casetta	<b>Photographer</b>	Everyone	<b>President Emeritus</b>	Terrie Dorio	Post Office Box 641925 Los Angeles, CA 90064	<p><b>Website</b>  <a href="http://www.WestsideQuiltersLosAngeles.org">www.WestsideQuiltersLosAngeles.org</a></p> <p>Facebook We're on Facebook. Check out the banner on the WQ website home page (lower center).</p> <p>iGive.com This is another way to benefit WQ when shopping on the Internet. Here you need to register (the iGive.com logo appears in the lower center on the WQ website home page and links you directly to iGive.com). More than 800 Internet retailers participate (Barnes &amp; Noble, Bed Bath &amp; Beyond, Enterprise Rent-A-Car, Lancome -- to name a few). Follow the instructions at iGive.com.</p> <p>Non-Profit Status Westside Quilters is tax-exempt from Federal income tax under section 501(c)(3) of the Internal Revenue Code, and classified as a public charity under section 170 of the Code, according to the determination letter dated May 26, 2011 received from the Internal Revenue Service. The effective date of exemption is June 17, 2010. Donations to Westside Quilters are fully tax-deductible for individuals and other entities such as corporations, partnerships, trusts; Westside Quilters is qualified to accept tax deductible bequests and gifts or transfers of gifts.</p> <p>F.E.I.N. 27-3145733                  (Federal Employer Identification Number)</p>
President	?????																											
Vice President	Pat Karasick																											
Secretary	Luann Jaffe																											
Treasurer	Karynn Dittmar																											
Program	Terrie Dorio,																											
Membership	Sonja Daniel																											
Newsletter	Debbie Nussbaum																											
Philanthropy	Virginia Marshall and Luann Jaffe																											
Website Manager	Sally Wright																											
<b>Hospitality</b>																												
<b>Meeting Set-Up/Take-Down</b>	Anata Withrington and Prima Casetta																											
<b>Photographer</b>	Everyone																											
<b>President Emeritus</b>	Terrie Dorio																											
Post Office Box 641925 Los Angeles, CA 90064																												

## Happy Valentines Day

